



GODREJ NURTURE
E-CITY PHASE 1, BANGALORE

www.godrejnurture.gen.in





Stock image for representative purpose only.

E-CITY

THE EPITOME OF SUCCESS, GROWTH AND SECURITY

THE IT CAPITAL



E-city is Bangalore's next IT hub after Whitefield, and is an attractive residential location due to its proximity to the IT campuses and good connectivity to E-City Flyover to Silk Board Junction and NICE Ring Road.

THE CONNECTIVITY JUNCTION



Proposed Hosur Airport in Belagondapallion Thally Road is expected to be close to E-City.



Excellent connectivity to Silk Board Junction (~12 kms), a major intersection which connects to Outer Ring Road and provides easy access to IT parks in ORR/Bellandur (Cisco, Intel, Sony, EXL) and Whitefield IT parks (SAP Labs, IBM)



Neeladri Road connects to the E-city flyover via Wipro Avenue Road. Also, the Heelalige Railway Station is approximately 20 mins from proposed site.



E-city comes under the Namma Metro Yellow Line (R V Road –Bommasandra line). The project is expected to complete in the year 2022.

THE CORPORATE HUB



One of India's largest electronic/IT industrial parks, spread over 323 hectares (3.2 km²).



The land parcel is attractively located right opposite to Wipro Ltd Tech Park on Shikaripalya road in the heart of E-City Phase I, South Bangalore.



The site exists in the middle of IT catchment of E-city with Wipro Ltd Tech Park, HCL, Infosys, BHEL, Tata Power and Hewlett-Packard, with a total of over 200 IT/ ITES companies within E-city.

THE EDUCATION & HEALTHCARE METROPOLIS



The site has easy access to all social infrastructures like schools, hospitals, banks, petrol pumps etc.

1 Hectare = 2.47105 Acres



Location Map





Artist's impression. Not an actual site photograph

SOCIAL INFRASTRUCTURE

TECH PARKS

- Infosys – 1.5 Kms
- Wipro – 250 mtr.
- Hewlett Packard – 2.8 Kms
- Salarpuria Infozone – 2 Kms
- Velankani Tech Park – 1.7 Kms
- Cyber Park – 1.2 Kms
- Tech Mahindra – 4.2 Kms
- Tata Consultancy services – 4 Kms
- HCL Technologies – 2.2 Kms

SCHOOLS

- Christ Academy – 6.4 Kms
- Delhi Public School – 4.2 Kms
- VIBGYOR – 4.3 Kms
- Mount Litera Zee School – 1 Km
- St. Xavier's School – 2.9 Kms
- Sherwood High School – 12.3 Kms
- Ebenezer International School – 7.7 Kms
- Treamis World School – 2.5 Kms
- Candor International School – 6.7 Kms
- Redbridge International Academy – 5.6 Kms
- IIFM Business School – 2.8 Kms

COLLEGES

- Symbiosis – 2.0 Kms
- Xavier Management Institute – 3.6 Kms

HOSPITALS

- Narayana Hrudalaya Clinic – 1.7 Kms
- Ramakrishna Hospital – 3.3 Kms

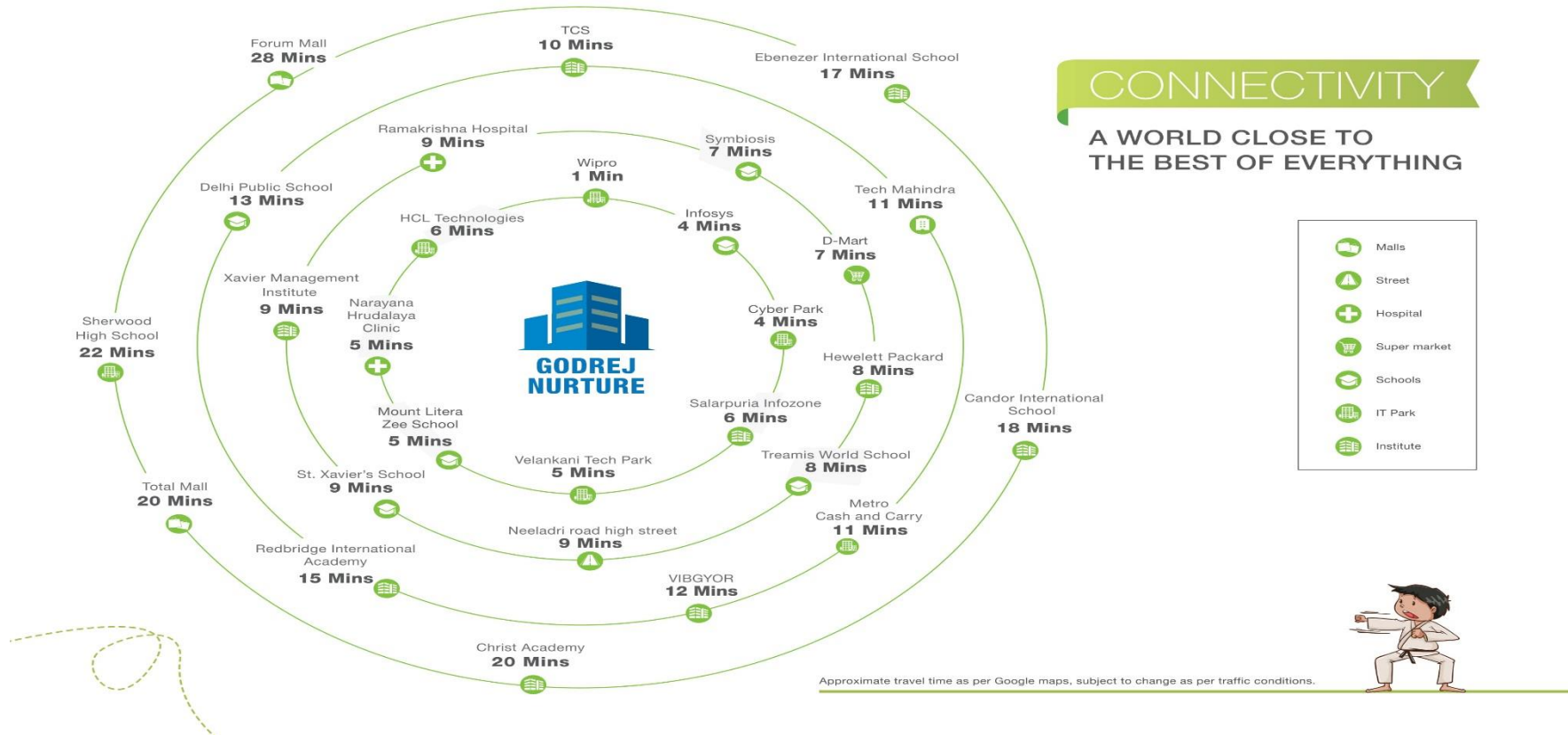
SHOPPING & ENTERTAINMENT CENTRES

- Dmart – 2.3 Kms
- Metro Cash and Carry – 4.1 Kms
- Forum Mall – 15 Kms
- Total Mall – 12.3 Kms
- Village Hypermarket – 5.4 Kms
- Meenakshi Mall – 13 Kms
- Neeladri Road High Street – 2.5 Kms
- Decathlon Sport Arena – 6.3 Kms

Source: Approximate distance as per Google maps.



Godrej Nurture Surroundings





CHILDHOOD OFF-SCREEN

Stock images for representative purpose only.





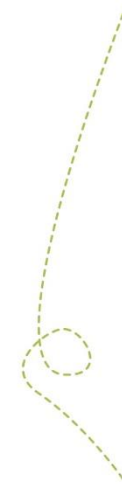
Stock image for representative purpose only.



INTRODUCING

GODREJ NURTURE

Have you ever lived in a home that sees to the physical, mental, cultural, safety and recreational development of children from an early age? Now you can as we welcome you to Godrej Nurture, Bangalore's first child-centric residential project. Part of a massive 2.33 hectares township with 0.5 hectares of open spaces, your home here won't be just another home; it will be a home that nurtures your child towards a better future.



1 Hectare = 2.47105 Acres

Amenities



Stock images for representative purpose only.



LEGO LOUNGE



COMICS LIBRARY



BOARD GAMES PLAYROOM



CHILDREN'S PLAY AREA

Stock images for representative purpose only.

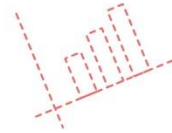


DANCE

Stock images for representative purpose only.



MUSIC





Stock images for representative purpose only.



INDOOR BADMINTON



CRICKET PRACTICE NET



MULTIPURPOSE COURT

Stock images for representative purpose only.



SWIMMING



CHESS

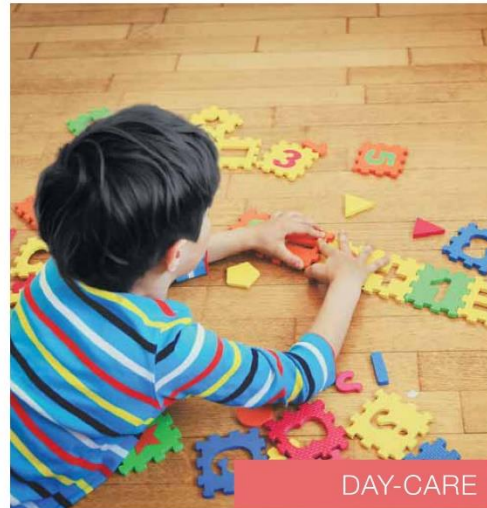
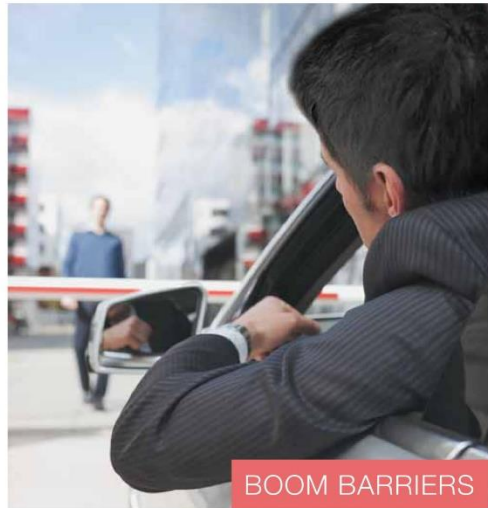


CYCLE TRACK



TABLE TENNIS

Stock images for representative purpose only.



Stock images for representative purpose only.



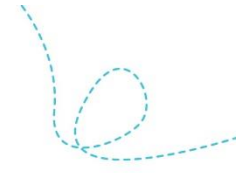
CLUB INFINITY

WITH STATE-OF-THE-ART CLUBHOUSE FACILITIES,
THE POSSIBILITIES ARE ENDLESS

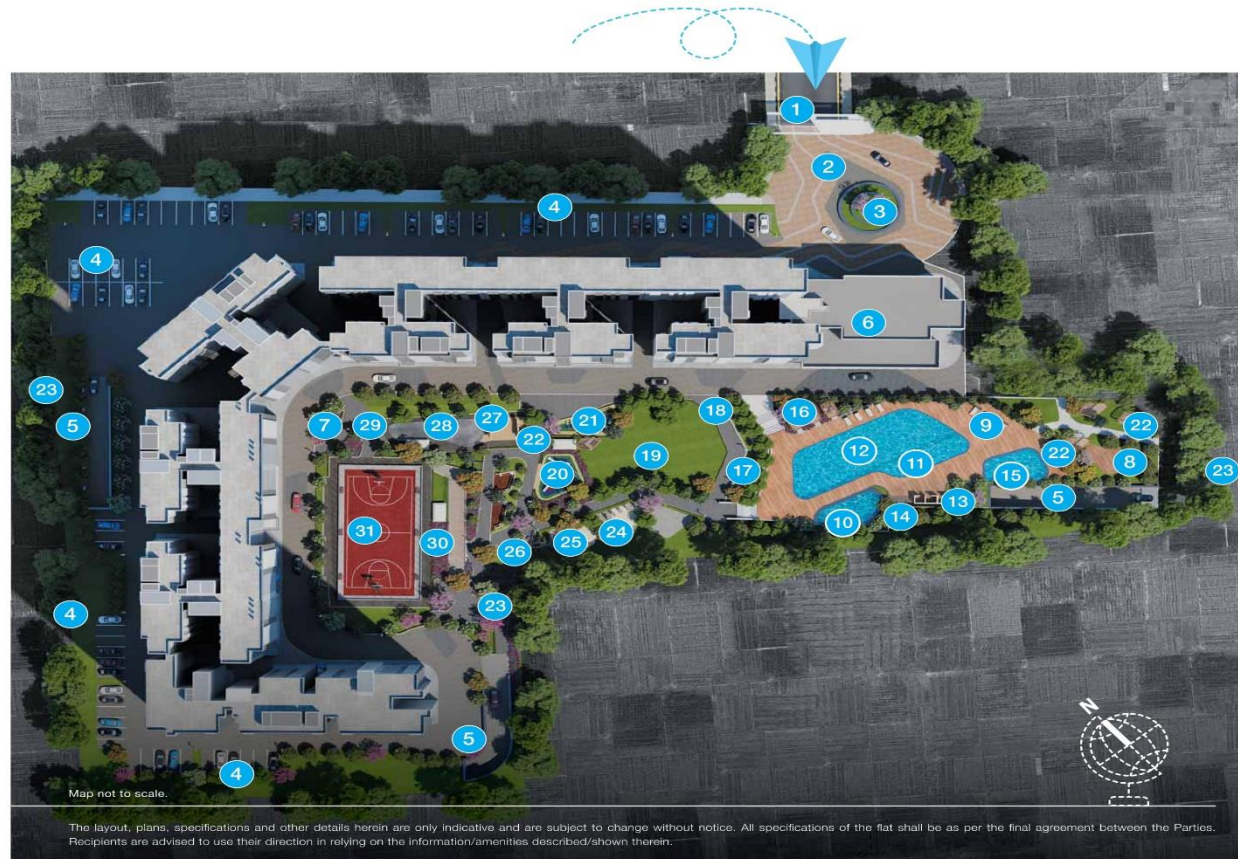
- Pharmacy
- ATM
- Billiards Room
- Library
- Party Hall
- Sports Room
- Aerobics/Yoga Room
- Arts & Crafts Room
- Gymnasium
- AV Room
- T.T. Room
- Personality Development



Stock images for representative purpose only.



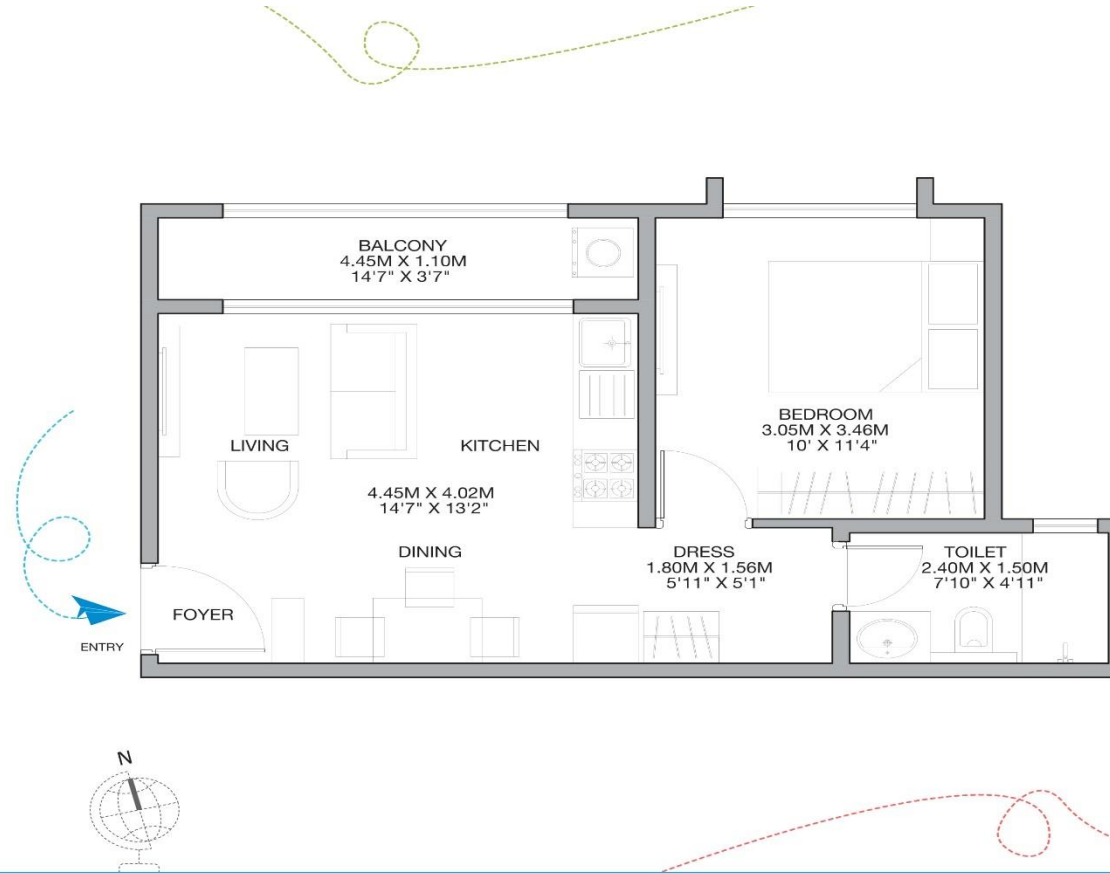
Master Plan



LEGEND

1. ENTRY/EXIT
2. DROP-OFF PLAZA
3. ISLAND FEATURE
4. PARKING BAYS
5. RAMP TO BASEMENT
6. CLUBHOUSE
7. SEATING AREA
8. YOGA DECK/MEDITATION CORNER
9. POOLSIDE LOUNGE
10. JACUZZI
11. WATER LOUNGE
12. SWIMMING POOL
13. CHANGING CUBICLES
14. OPEN SHOWER
15. KIDS' POOL
16. SMART PAVILLION - CHARGING PODS
17. AMPHITHEATRE
18. PEDESTRIAN PATHWAY
19. OPEN PARTY LAWN
20. CHILDREN'S PLAY AREA
21. ENTRANCE COURT
22. PAVILLION
23. SERVICES
24. FITNESS STATION
25. SENIORS' CORNER
26. SEATING CORNER
27. ROCK CLIMBING WALL
28. SKATING AREA
29. CYCLE TRACK FOR KIDS
30. CRICKET NET PRACTICE
31. MULTIPURPOSE COURT

1 BHK Floor Plan



GODREJ NURTURE E-CITY PHASE 1

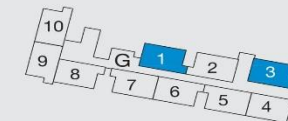
TOWER-G

1BHK

Floors-1,2,3,4,5,6,7,8,9,10,11,12,13,
14,15,16,17,18,19, 20 & 21

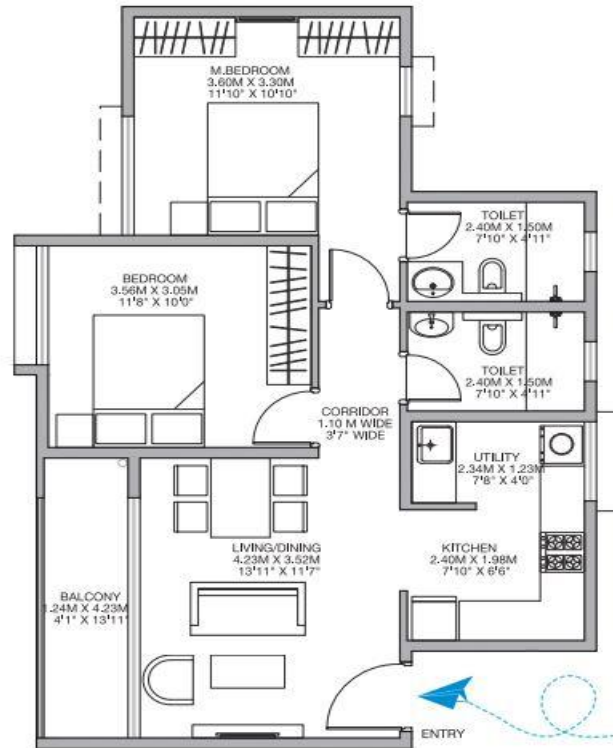
Unit Nos. G-01/03

Saleable Area: 618 sq. ft. (57.44 sq. m.)
RERA Carpet Area: 397 sq. ft. (36.92 sq. m.)
RERA Balcony Area: 50 sq. ft. (4.69 sq. m.)



KEY PLAN:N.T.S

2 BHK Floor Plan



GODREJ NURTURE E-CITY PHASE 1

TOWER-E & F
2 BHK

Unit No. E-04

Floors-2,3,4,5,6,7,8,9,10,11,12,13,
14,15,16,17,18,19,20 & 21

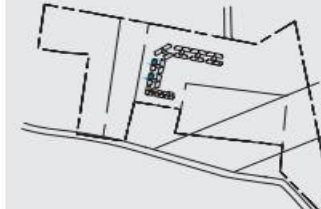
Unit No. F-04

Floors-2,3,4,5,6,7,8,9,10,11,12,13,
14,15,16,17,18,19 & 21

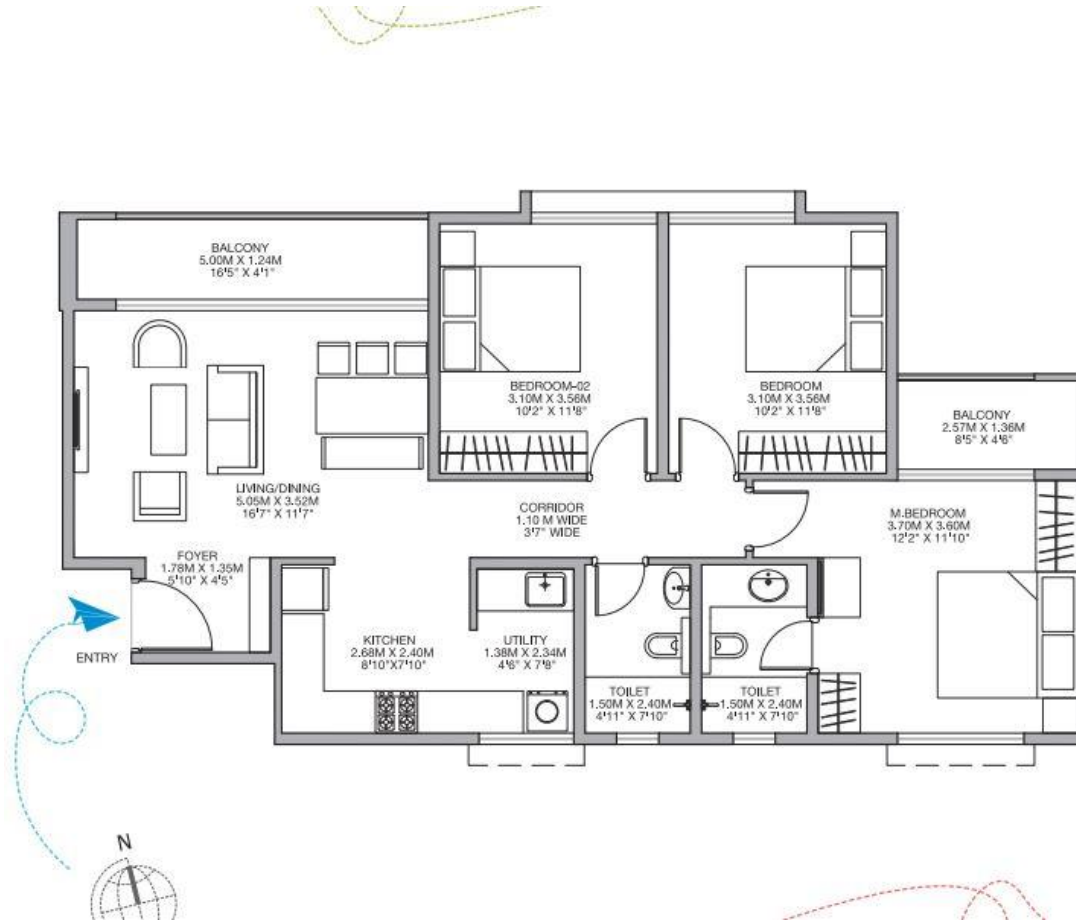
Saleable Area: 957 sq. ft. (88.92 sq. m.)
RERA Carpet Area: 646 sq. ft. (60.05 sq. m.)
RERA Balcony Area: 55 sq. ft. (5.19 sq. m.)



KEY PLAN: N.T.S



3 BHK Floor Plan Comfort



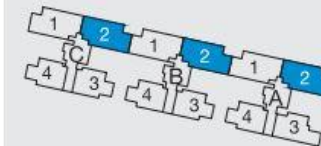
GODREJ NURTURE
E-CITY PHASE 1

TOWER-A,B & C
3 BHK COMFORT

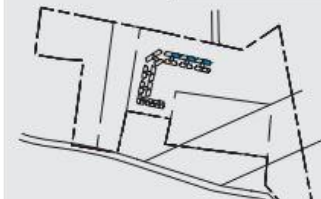
Unit No. A-02,B-02 & C-02

Floors-2,3,4,5,6,7,8,9,10,11,12,13,
14,15,16,17,18,19,20 & 21

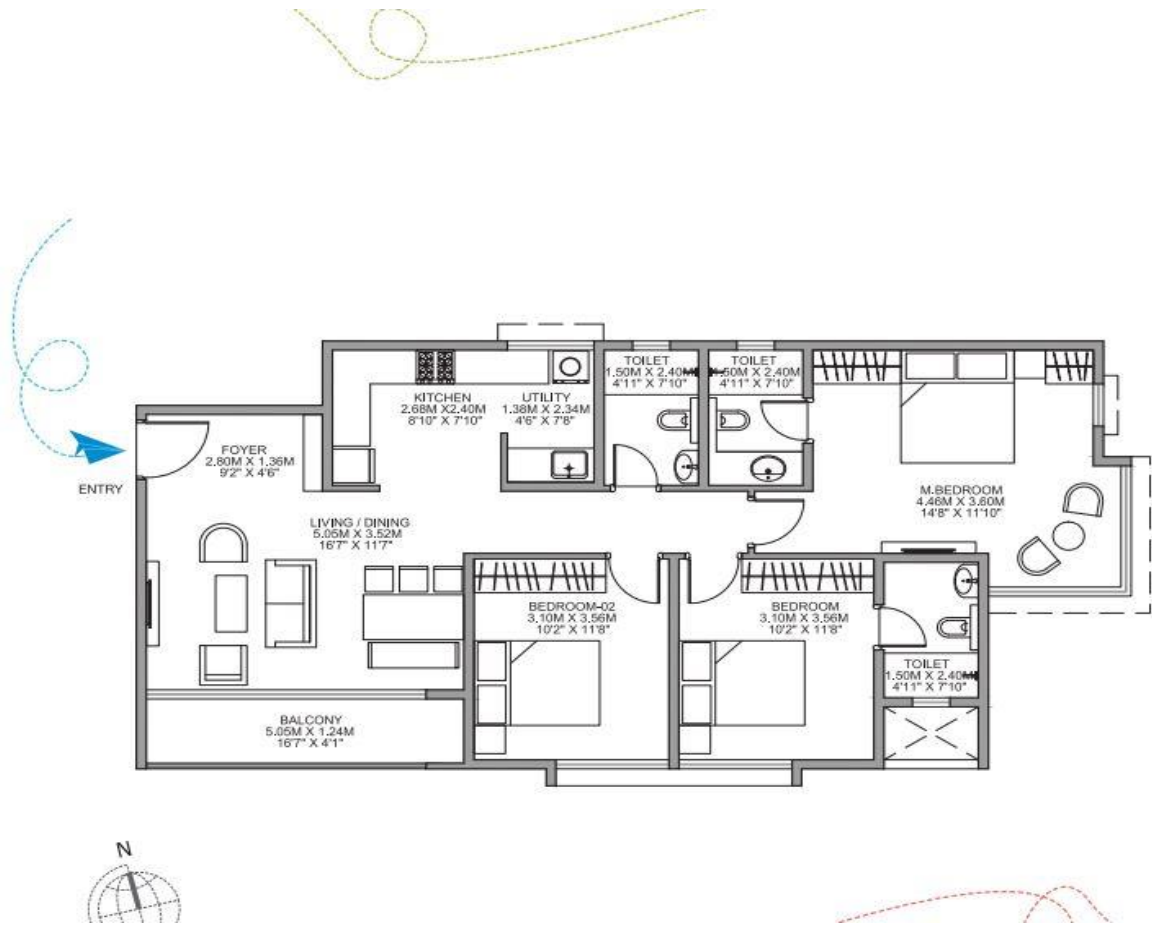
Saleable Area: 1376 sq. ft. (127.89 sq. m.)
RERA Carpet Area: 908 sq. ft. (84.43 sq. m.)
RERA Balcony Area: 103 sq. ft. (9.58 sq. m.)



N
KEY PLAN:N.T.S



3 BHK Floor Plan Large



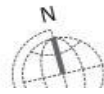
GODREJ NURTURE
E-CITY PHASE 1

TOWER-A
3 BHK LARGE
Unit No. A-03
Floors-6,7,8,9,10,11,12,13,14,15,16,17,18,19,20 & 21

Saleable Area: 1469 sq. ft. (136.55 sq. m.)
RERA Carpet Area: 1013 sq. ft. (94.19 sq. m.)
RERA Balcony Area: 66 sq. ft. (6.20 sq. m.)

KEY PLAN: N.T.S

The key plan shows a grid of units with Tower A highlighted in blue. Unit A-03 is the unit in the highlighted tower. A north arrow is also present.



Specifications



SPECIFICATIONS



Flooring

- Living/Dining/Foyer - Vitrified tiles
- Master bedroom - Vitrified tiles
- Other bedrooms - Vitrified tiles
- Toilets (Flooring) - Anti-skid ceramic tiles
- Toilets (Dado) - Ceramic tiles
- Balconies - Anti-skid ceramic tiles
- Kitchen (Flooring) - Vitrified tiles
- Indoor/Attached Utility - Vitrified tiles/Anti-skid ceramic tiles



Doors/ Windows

- Main entrance - Teak frame with flush door shutter with veneer and melamine polish
- Internal doors - Hardwood frame with paint finish shutter
- UPVC window - UPVC window with mosquito mesh



Paint

- Wall Interior + Emulsion paint
- Ceiling - Oil-bound distemper





Stock image for representative purpose only.

SPECIFICATIONS



Kitchen

- Granite counter top + SS sink (only in 1BHK)
- Granite top with MS framework support with a SS sink without drain board in utility area
- Bare-shell Kitchen



Toilet

- CP and Sanitary fittings - Parryware or equivalent
- False ceiling in toilets with one light fixture
- MBR toilet : Granite counter with under-counter washbasin
- Other toilets: Wall hung washbasin



Power

- 1 BHK : 3kW – Single phase
- 2 BHK : 4kW – Single phase
- 3 BHK : 5kW – Single phase





Stock image for representative purpose only.

SPECIFICATIONS



Balcony railing

- MS railing



Car Parking

- Provided



DG Backup to Flat

- 1 BHK : 0.75kW – Single phase
- 2 BHK : 1kW – Single phase
- 3 BHK : 1kW – Single phase



Other Features

- Child-centric specifications
- RFID tags
- CCTV
- Latches for WC
- Boom barriers across the project
- Day-care



RERA No

PRM/KA/RERA/1251/308/PR/1912200/003093

Call For Booking

GODREJ NURTURE
E-CITY PHASE 1, BANGALORE

+91 8861265544

Refer:

- <http://godrejnurture.yolasite.com/>
- <http://godrejnurture.eklablog.com/>
- <https://sites.google.com/view/godrejnurtureelectroniccity/home>
- <https://start.me/p/5vez6P/godrej-nurture-bangalore>
- <http://www.40billion.com/profile/838590433>
- <https://godrejnurtureelectroniccity.bandcamp.com/>
- <https://www.redbubble.com/people/nurtureecity>