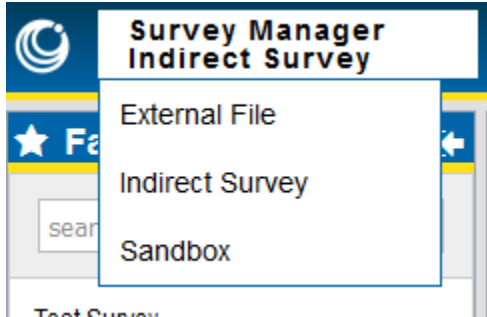


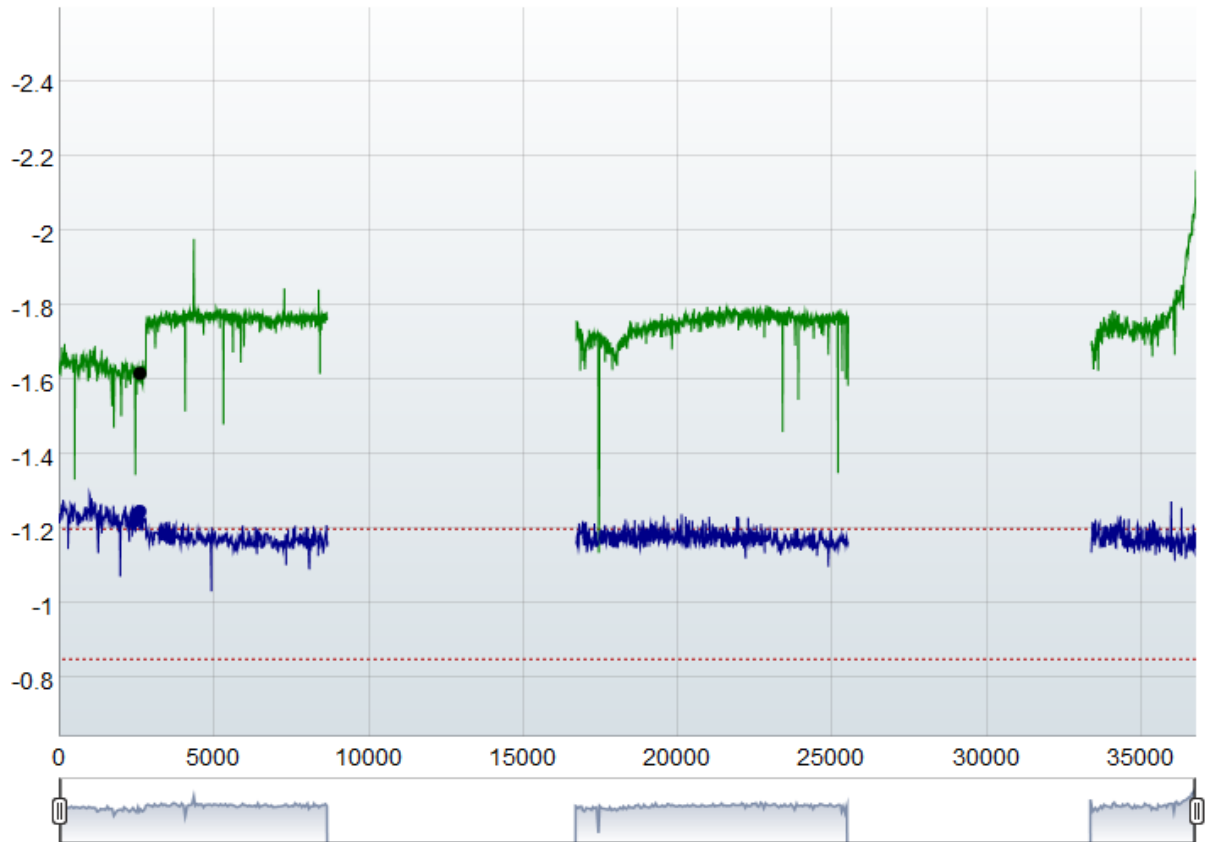
Getting Started with Indirect Surveys

1. Log in
2. In the upper left-hand corner, select Indirect Survey




3. In the Navigation pane on the left, select your company
4. Add a Region, Line, Job Number, and select survey type CIS
5. Add a Survey and select it
6. Click the white + button next to Segments to add a new segment
7. Select a technician or yourself
8. Pick a date
9. Drag a survey segment into the rectangle at the bottom. You can use .csv, .xlsx, or .svy files with .svy (Allegro) files being the easiest to import.
10. We have provided 3 survey segments for you to use cis file 1.csv, cis file 2.csv, cis file 3.csv. Drag all three files into the rectangle.
11. See how the graph doesn't look quite right? There are big gaps. That's because one of the segments needs to be reversed.

Measure: 2626 On: -1.617 Off: -1.247



12. Drag your mouse all the way across the graph paying attention to the corresponding movement of the icon along the line in the map. See how the first and last segment go north to south but the middle one does the opposite?
13. Click the arrow next to cis file 2.csv, then click All Segments.

 cis file 2.csv



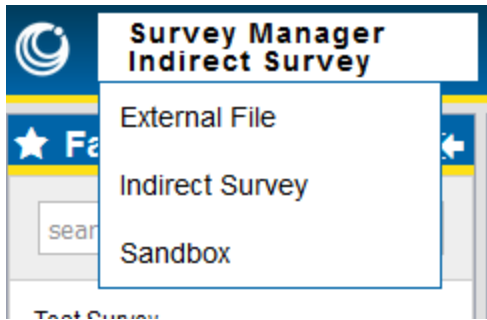
14. All better, now load your own data if you like!

Getting Started with Periodic Surveys

1. In the upper-left hand corner select External File.
2. In the Navigation pane on the left, select your company
3. Click the white + sign next to File
4. Drag an Allegro .dat file into the box and click Upload

Creating Overlays

1. Select a CIS or Depol survey you would like to include in the overlay, and click the “Add to Sandbox” button in the upper right hand corner of the table view.
2. Select another CIS or Depol survey and do the same thing.
3. In the upper-left hand corner, navigate to the Sandbox.



4. Select one or more components of the two surveys you'd like to overlay.
5. Click the Compare Surveys button in the upper right-hand corner of the graph

Recalculating Stationing

1. Open a CIS or depol survey.
2. Identify a known station identifier, zoom into it, and right click on the chart. Select Add Station.
3. Add a few more known station numbers if you like.
4. Click the Refresh next to Segments in the navigation pane.

Adding Skips

1. Open a CIS or depol survey.
2. Zoom in on the chart area where you'd like to add a skip.
3. Hold down the Alt key, left click and drag starting with where the skip begins and ending where it should end.
4. Choose Set as Skip, and confirm.

Flagging Spikes

1. Open a CIS or depol survey.
2. Zoom in on the chart area where you'd like to flag a spike.
3. Hold down the Alt key, left click and drag starting with where the skip begins and ending where it should end.
4. Choose Flag On Spike or Flag Off Spike, and confirm.

Link a Waveprint

1. Select survey type Waveprint
2. Upload as many waveprints as you would like (.txt files from the Allegro).
3. Navigate to a CIS or Depol survey.
4. Select the point on the chart / map where the waveprint was taken.
5. Right click on the chart and choose Waveprint.
6. Select one of the previously loaded Waveprints to associate with that location and click Confirm.

Run Reports

1. Open a CIS or depol survey.
2. Navigate to Tools > Run Reports

3. Select Chart PDF and customize the general, Cover Page, and Report Pages tabs.
4. Click Submit.